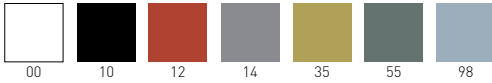




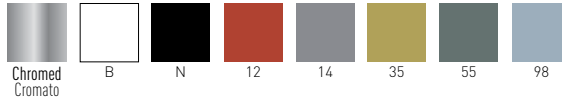
Versioni IGN Omologate dal Ministero dell'Interno,
Classe di Reazione al fuoco 1



Available Shell Color / Colori disponibili Scocca



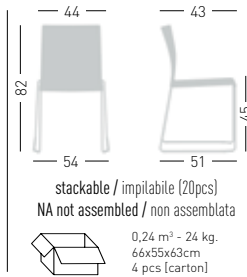
Frame Finishes / Finiture telaio



ARTESIA S



Chromed or Painted wire steel sled frame, techno-polymer shell.
Struttura a slitta in filo, cromata o verniciata, scocca in tecnopolimero.



stackable / impilabile (20pcs)
NA not assembled / non assemblata



0,24 m³ - 24 kg.
66x55x63cm
4 pcs [carton]

Frame Finishing & Codes / Finiture Telaie e Codici

- cod. 110.--/S chromed/cromata
- cod. 110.--/SB white painted/verniciato bianco
- cod. 110.--/SN black painted/verniciato nero
- cod. 110.--/S55 mineral grey painted/verniciato grigio minerale
- cod. 110.--/S14 pearl grey painted/verniciato grigio perla
- cod. 110.--/S12 brick painted/verniciato mattone
- cod. 110.--/S35 lime painted/verniciato lime
- cod. 110.--/S98 pale blue painted/verniciato avio

- cod. 110.00/IGNS-- Fire Retardant/Ignifuga Classe 1
- cod. 110.55/IGNS-- Fire Retardant/Ignifuga Classe 1
- cod. 110.14/IGNS-- Fire Retardant/Ignifuga Classe 1
- cod. 110.98/IGNS-- Fire Retardant/Ignifuga Classe 1

Fire Retardant minimum Order 20pcs
Ignifuga ordine Minimo 20pz

Black glides on black frames.
Neutral glides on other frame finishes.
Piedini neri su telai neri.
Piedini neutri nelle altre finiture telaie.

ARTESIA SS



Chromed or Painted wire steel sled frame with armrests, techno-polymer shell.
Struttura a slitta in filo con braccioli, cromata o verniciata, scocca in tecnopolimero.

The arm pads are in the same color of the shell.
Il copribracciolo è dello stesso colore della scocca.



stackable / impilabile (20pcs)
NA not assembled / non assemblata



0,48 m³ - 29,50 kg.
60x56x51cm
+ 54x60x92cm
4 pcs [carton]

Frame Finishing & Codes / Finiture Telaie e Codici

- cod. 110.--/SS chromed/cromata
- cod. 110.--/SSN black painted/verniciato nero

- cod. 110.00-00/IGNSS chromed/cromata Fire Retardant/Ignifuga Classe 1
- cod. 110.00-00/IGNSSN black painted/verniciato nero Fire Retardant/Ignifuga Classe 1
- cod. 110.55-55/IGNSS chromed/cromata Fire Retardant/Ignifuga Classe 1
- cod. 110.55-55/IGNSSN black painted/verniciato nero Fire Retardant/Ignifuga Classe 1
- cod. 110.14-14/IGNSS chromed/cromata Fire Retardant/Ignifuga Classe 1
- cod. 110.14-14/IGNSSN black painted/verniciato nero Fire Retardant/Ignifuga Classe 1
- cod. 110.98-98/IGNSS chromed/cromata Fire Retardant/Ignifuga Classe 1
- cod. 110.98-98/IGNSSN black painted/verniciato nero Fire Retardant/Ignifuga Classe 1

Fire Retardant minimum Order 20pcs
Ignifuga ordine Minimo 20pz

Black glides on black frames.
Neutral glides on other frame finishes.
Piedini neri su telai neri.
Piedini neutri nelle altre finiture telaie.

ARTESIA TABLET / TAVOLETTA



Removable anti-panic tablet, chromed or black painted wire steel frame, black techno-polymer arm and tablet.
Tavoletta antipanico removibile, struttura in filo cromato o verniciato nero, bracciolo e tavoletta in tecnopolimero nero.



xx m³ - xx kg.
xxxxx cm
x pcs [carton]

Frame Finishing & Codes / Finiture Telai e Codici

cod.1210 chromed frame/struttura cromata
cod.1210.10 black painted frame/struttura verniciata nera

Min. order 4pcs
each code
Ordine min 4pz
per codice

ARTESIA NARROW CUSHION / CUSCINO STRETTO



Narrow upholstered cushion, suitable for chair stackability.
Cuscino tappezzato stretto, adatto a sedute che devono essere impilate.

Available fabric.
Tessuti disponibili.

TF, E, K, DK
COM fabric / Tessuto cliente **TC** (10 pcs min)



0,450kg/pz
Inside chairs boxes
Inseriti nella
scatola delle sedie

Frame Finishing & Codes / Finiture Telai e Codici

cod.330.-- (TF)
cod.330.-- (E)
cod.330.-- (K)
cod.330.-- (DK)
cod.330.TC COM fabric/tessuto cliente

Fabric required
Fabbisogno di tessuto
4 pcs: Lin Mtrs 1,0 (h1,40)

COM fabric min. order
10pcs each code
Tessuto cliente TC ordine
min. 10pz per codice

Min. order 4pcs
each code
Ordine min 4pz
per codice

ARTESIA WIDE CUSHION / CUSCINO LARGO



Large upholstered cushion.
Cuscino tappezzato largo.

Available fabric.
Tessuti disponibili.

TF, E, K, DK
COM fabric / Tessuto cliente **TC**
(10 pcs min)



0,500kg/pz
Inside chairs boxes
Inseriti nella
scatola delle sedie

Frame Finishing & Codes / Finiture Telai e Codici

cod.331.-- (TF)
cod.331.-- (E)
cod.331.-- (K)
cod.331.-- (DK)
cod.331.TC COM fabric/tessuto cliente

Fabric required
Fabbisogno di tessuto
4 pcs: Lin Mtrs 1,2 (h1,40)

COM fabric min. order
10pcs each code
Tessuto cliente TC ordine
min. 10pz per codice

Min. order 4pcs
each code
Ordine min 4pz
per codice

ARTESIA LINKING / AGGANCI



Set linking glides for in-line disposal.
Set piedini con agganci per disporre le sedute in linea.

Available for model S (even with tablet) and SS
Disponibile per versioni S (anche con tavoletta) e SS.



Inside chairs boxes
Inseriti nella
scatola delle sedie

Frame Finishing & Codes / Finiture Telai e Codici

cod.1013 neutral/neutro
cod.1013.10 black/nero

ARTESIA CHAIR TROLLEY / CARRELLO PER SEDIE



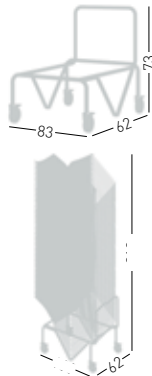
Trolley for Chairs with handle, painted black metal structure, heavy duty castors with brakes.
Carrello porta sedie con maniglia, struttura in metallo verniciata nera, ruote ad alta resistenza con freni.

Available for model S and SS
Disponibile per versioni S e SS

Stackable on trolley 50pcs (H210cm)
Impilabili su carrello 50pz (H210cm)



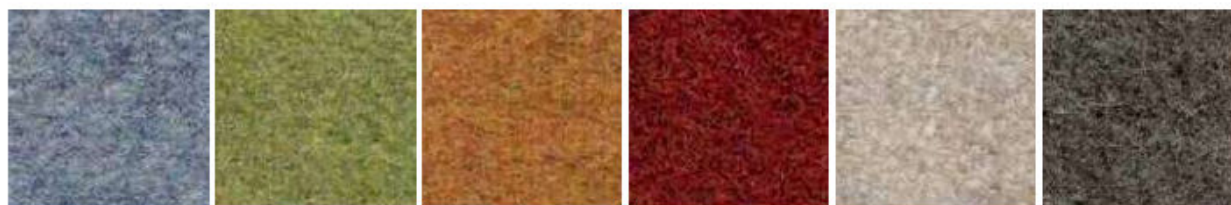
0,42 m³ - 11,50 kg.
74x58x97cm
1 pcs [carton]



Frame Finishing & Codes / Finiture Telai e Codici

cod.2008/A

TF Fenice Fabric / Tessuto Fenice



351

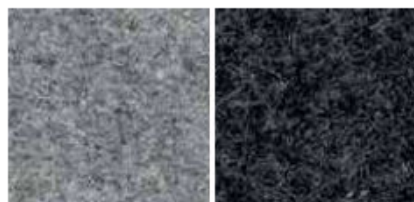
451

101

201

505

551



601

603

- Composition: 75% WOOL - 25% POLYAMMIDE
- Abrasion: UNI EN ISO 12497:2000 100.000 Cycle Martindale \pm 20%
- Light Resistance-Xenotest: UNI EN ISO 105-B02 / 4 (tol from 3 to 5)
- Fire proof: IT - CLASSE 1 IM Using a standard FR polyurethane foam 25kg/mcu density, CAL 117-2013 EN-1021 Part 1-2 using a standard foam 20/22 Kg/mcu density
- Maintenance: Use vacuum-cleaner, don't brush.

E Simil leather Aurea / Ecopelle Aurea



23

7

14

15

16

8



9

10

17

19

21

11



2

3

5

6



1

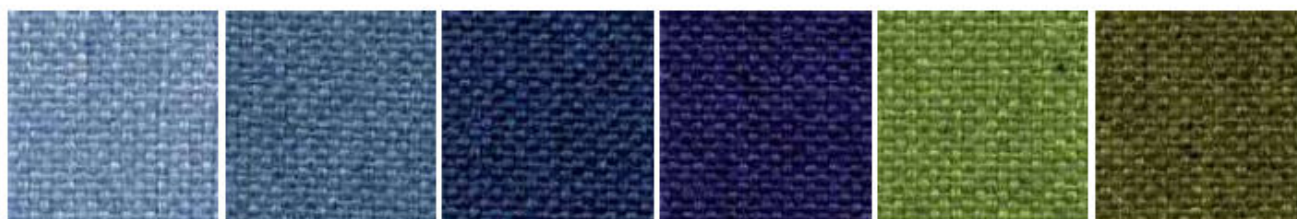
22

28

26

- Composition: 72% PVC - 3% PU - 25% COTTON
- Abrasion: EN ISO 5470-2 50.000 Cycle Martindale
- Light Resistance-Xenotest: UNI EN ISO 105-B02 / 6
- Fire proof: IMO resolution A.652 (16): 1989, BS 5852 CRIB 5, BS 5852-1 PART 1, EN 1021-2, UNI 9175 CLASSE 1, TB 117 sez. E - p.1 (California)
- Maintenance: Dust gently or pass the surface with a damp cloth.

K King Fabric / Tessuto King



6001

6091

6034

6052

7019

7022



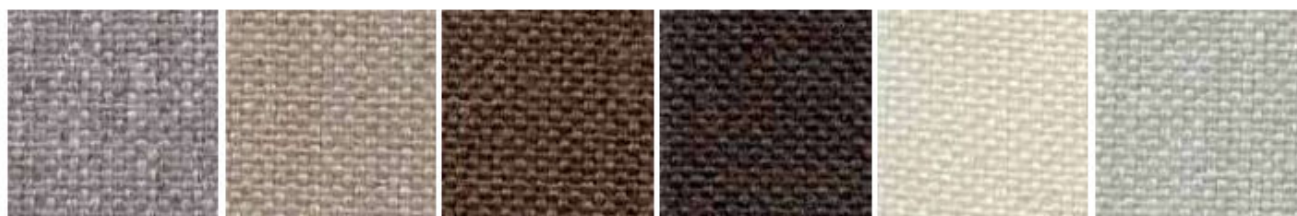
3030

3082

4021

4032

5001



1033

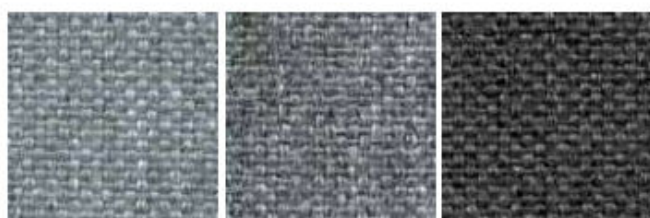
1008

2003

2007

1012

1025



8032

8006

8011

- Composition: 100% POLYESTER - TREVIRA CS
- Abrasion: UNI EN ISO 12947-2 80.000 Cycle Martindale $\pm 10\%$
- Light Resistance-Xenotest: UNI EN ISO 105-B02 / 6 (tol from 5 to 8)
- Fire proof: UNI 9174 - 8456 Class C1, UNI 9175 Class 1, DIN 4102 Class B1, NF 92501-7 Class M1, NF D 60013 Class AM18, EN 1021-1 & 2, BS Crib 5, BS 7176 Class Medium Hazard, EN 13773 Class 1, OENORM 3800-1 Class B1, Q1, TR1, California TB117, USA NFPA 701, USA NFPA 260, IMD A 652 (16) Part 8 Upholstery
- Maintenance: Standard 60° C cotton cycle.

DK Kvadrat Fabric (Steelcut2) / Tessuto Kvadrat (Steelcut2)



835

760

780

950

975



435

445

535

550

635

625



685

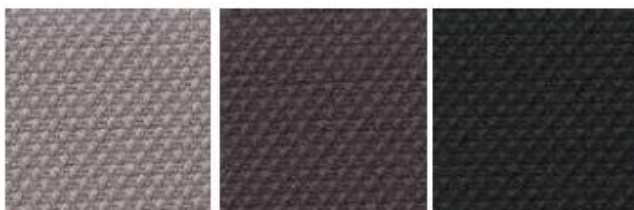
255

365

655

110

140



155

180

190

- Composition: 90% New wool worsted - 10% Nylon
- Abrasion: Approximately 80.000 Martindale rubs, EN ISO 12947
- Lightfastness: Note 5-7, ISO 105-B02
- Fire proof: AS/NZS 3837, class 2, BS 5852 Crib 5 with treatment, BS 5852 part 1, DIN 4102 B2, EN 1021-1/2, IMO FTP Code 2010 Part 8, NF D 60 013, ÖNORM B1/ 01, UNI 9175 1IM, US CaL. Bull. 117-2013, NFPA 260, AS/NZS 1530.3, SN 198 898 5.3 with treatment