

---

# BuzziBracks

## Curtain Collection

---

---



**Genesisys**  
OFFICE FURNITURE  
*DELIVERING FURNITURE SOLUTIONS SINCE 1997*  
[www.genesys-uk.com](http://www.genesys-uk.com) [sales@genesys-uk.com](mailto:sales@genesys-uk.com)

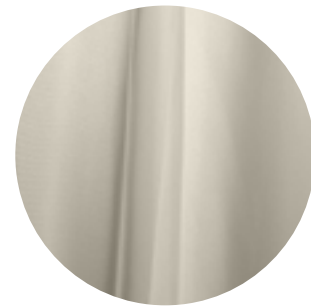


# CUR A

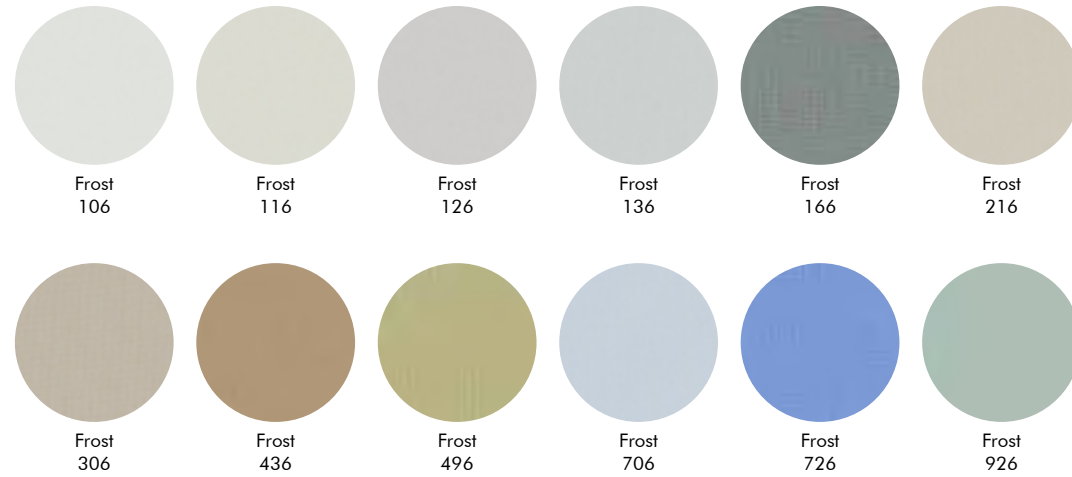
FROST

## Frost

kvadrat

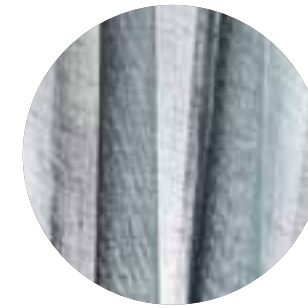


**Characteristics** Transparent  
**Composition** 50% polyester FR, 50% polyester  
**Weight** App. 150 g/lin.m  
**Flammability** EN 13 773 class 1 | BS 5867 part 2 type B | DIN 4102 B1 | SN 198 898 5.2 | NF D 92 507 M1 | UNI 9177 classe 1 | NFPA 701 | AS/NZS 1530.3 | IMO A.471 (XII)  
**Fastness to light** Note 5-7, ISO 105-B02  
**Maintenance** Washable at max. 60°C. Drip drying  
Ironing will be necessary

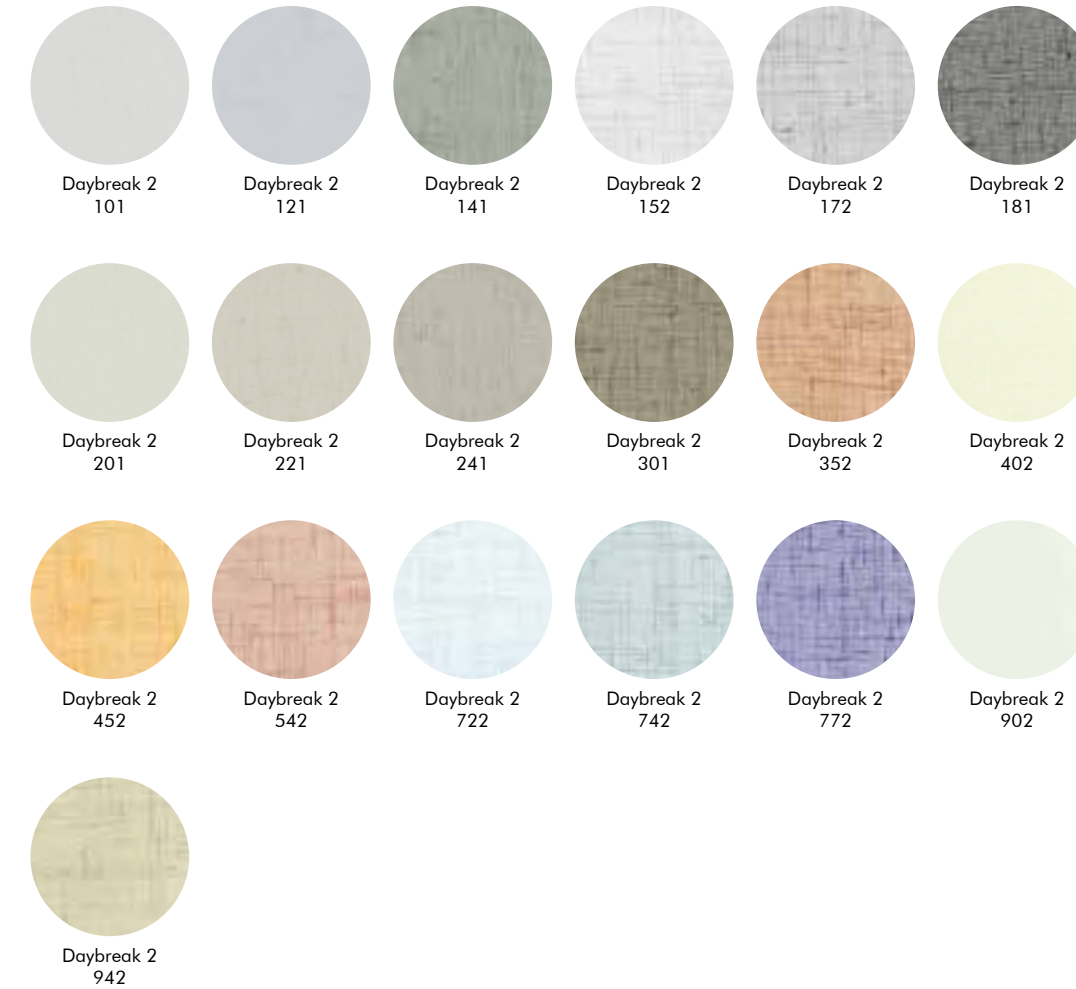
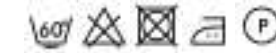


## Daybreak 2

kvadrat



**Characteristics** Transparent  
**Composition** 100% polyester FR  
**Weight** App. 270 g/lin.m  
**Flammability** EN 13 773 class 1 | BS 5867 part 2 type B | DIN 4102 B1 | SN 198 898 5.2 | NF D 92 507 M1 | UNI 9177 classe 1 | AS/NZS 1530.3 | IMO A.471 (XII)  
**Fastness to light** Note 5-7, ISO 105-B02  
**Maintenance** Washable at max. 60°C. Drip drying  
Ironing will be necessary



# CUR B

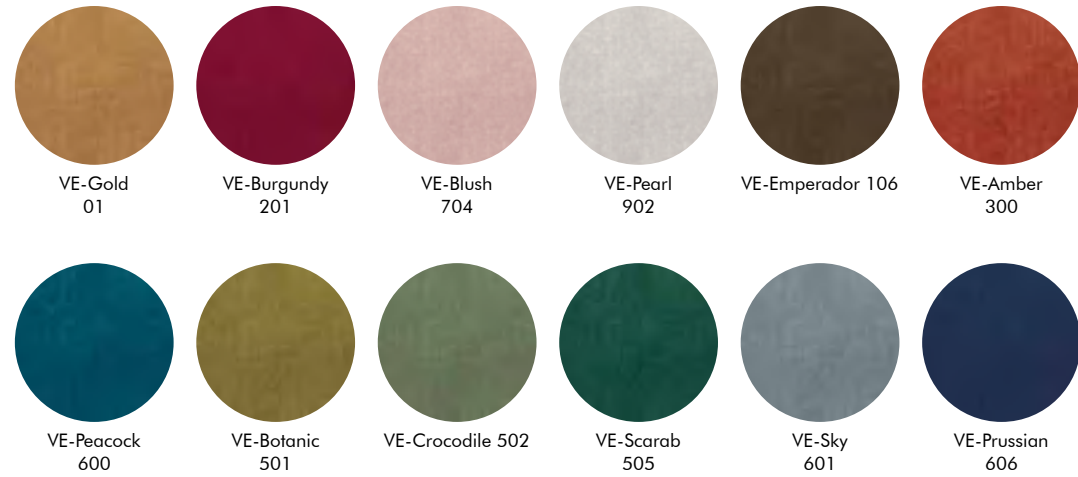
DAYBREAK 2  
VELVET

**CUR B**  
DAYBREAK 2  
VELVET

**Velvet**

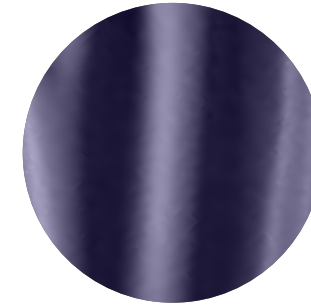


**Characteristics** Acoustic, Opaque  
**Composition** 100% PES  
**Weight** 375 g/m<sup>2</sup> | 11.06 oz/yd<sup>2</sup>  
**Width** 140 cm | 55.12"  
**Thickness** 0,7mm | 0.0275"  
**Abrasion resistance** >100.000 Martindale  
**Flammability** USA: CAL TB 117  
**Fastness to light** EU: 4-5  
**Fastness to rubbing** EU: Wet 4 | Dry 4-5  
**Pilling** EU: 4-5  
**Match** Weight ±5% | Width ±2%  
**Maintenance** Washable at 40°C. Drip drying.

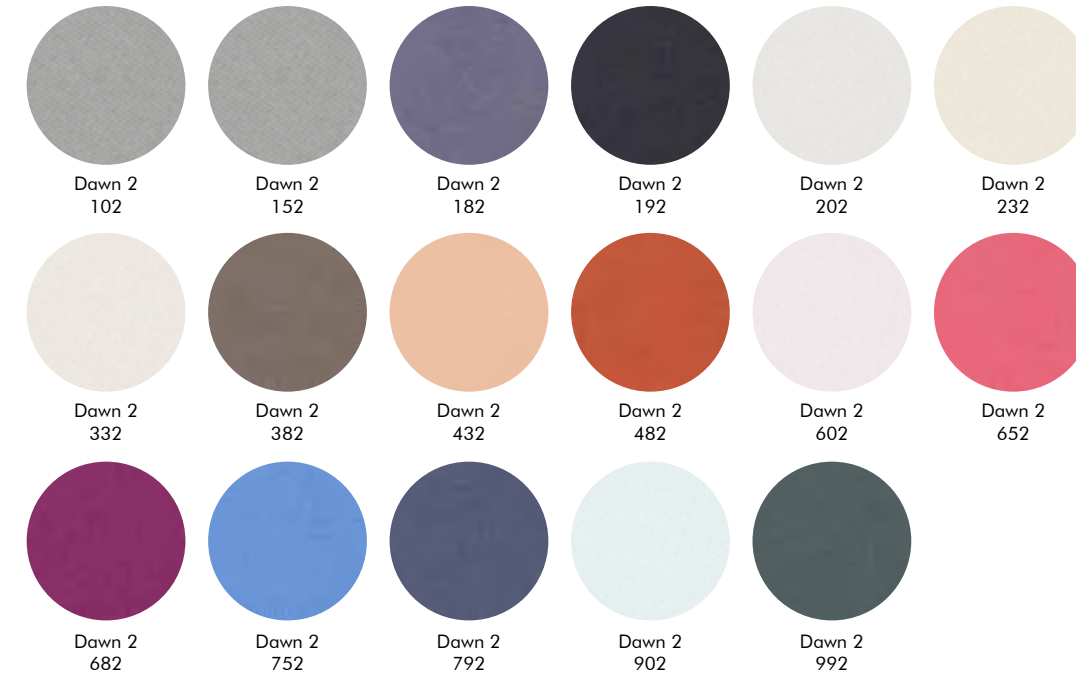


**Dawn 2**

**kvadrat**



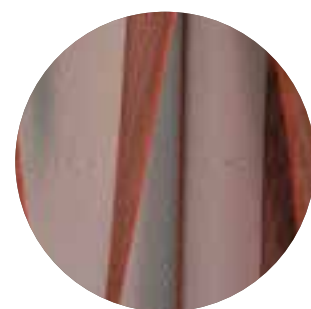
**Characteristics** Acoustic, Opaque, Light transmittance of 0-0,2% (DIN EN 410)  
**Composition** 100% polyester FR  
**Weight** App. 780 g/lin.m  
**Flammability** EN 13 773 class 1 | EN 13501, B-s1, d0 | BS 5867 part 2 type B | DIN 4102 B1 | SN 198 898 5.2 | NF D 92 507 M1 | UNI 9177 classe 1  
**Fastness to light** Note 5-7, ISO 105-B02  
**Maintenance** Washable at max. 60°C. Half wash load. Drip drying. Ironing might be necessary when washed at 60°C.



**CUR C**  
DAWN 2  
ZULU 2

CUR C  
DAWN 2  
ZULU 2

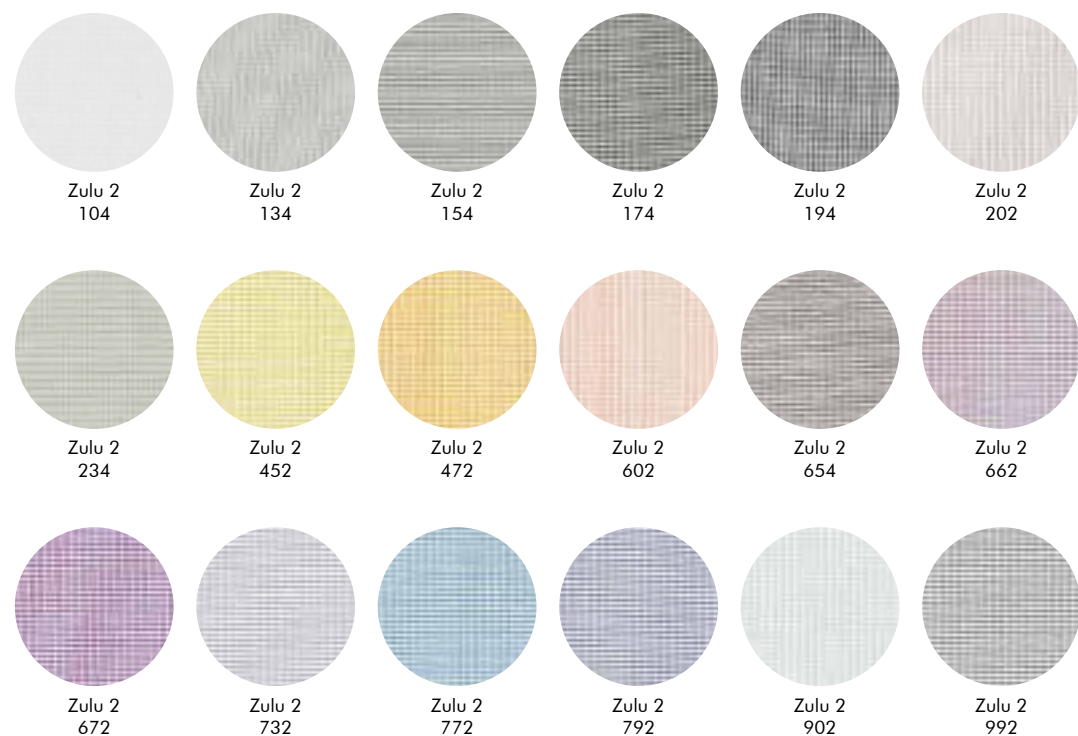
Zulu 2



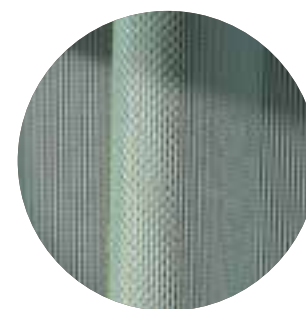
**Characteristics** Transparent  
**Composition** 100 % Trevira CS  
**Weight** App. 300 g/lin.m  
**Flammability** EN 13 773 class 1 | BS 5867 part 2 | DIN 4102 B1 | NF P 92 507 M1 | UNI 9177 classe 1 | IMO FTP Code 2010:Part 7  
**Fastness to light** Note 7, ISO 105-B02  
**Maintenance** Washable at 40°C. Dripdrying



kvadrat



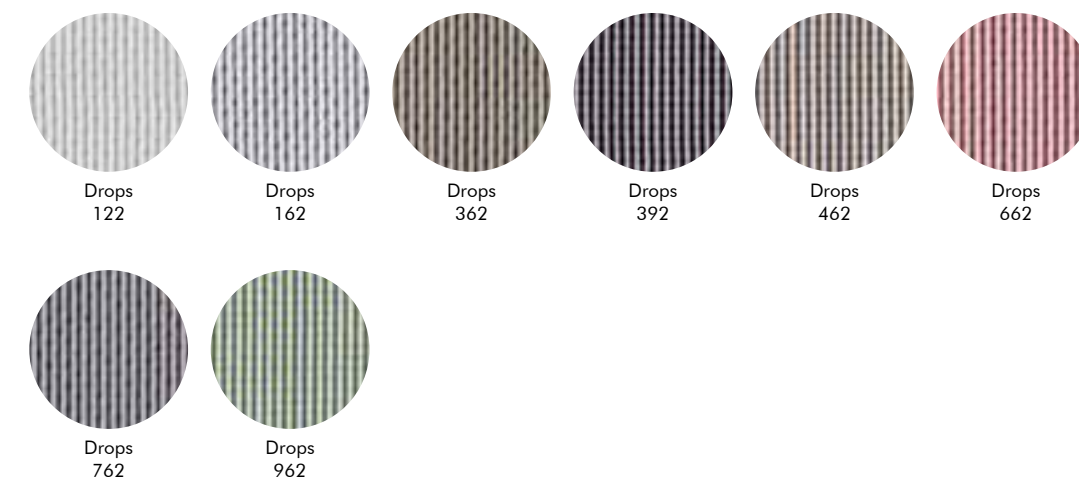
Drops



**Characteristics** Transparent  
**Composition** 100 % Trevira CS  
**Weight** App. 225 g/lin.m  
**Flammability** EN 13 773 class 1 | BS 5867 part 2 type B | DIN 4102 B1 | NF D 92 507 M1 | UNI 9177 classe 1 | FAR 25.853 | IMO FTP Code 2010:Part 7  
**Fastness to light** Note 6-7, ISO 105-B02  
**Maintenance** Washable at max. 60°C. Dripdrying.



kvadrat



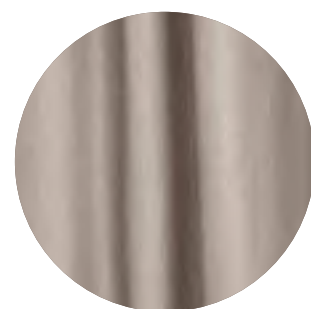
CUR D  
DROPS  
MI CASA

# CUR D

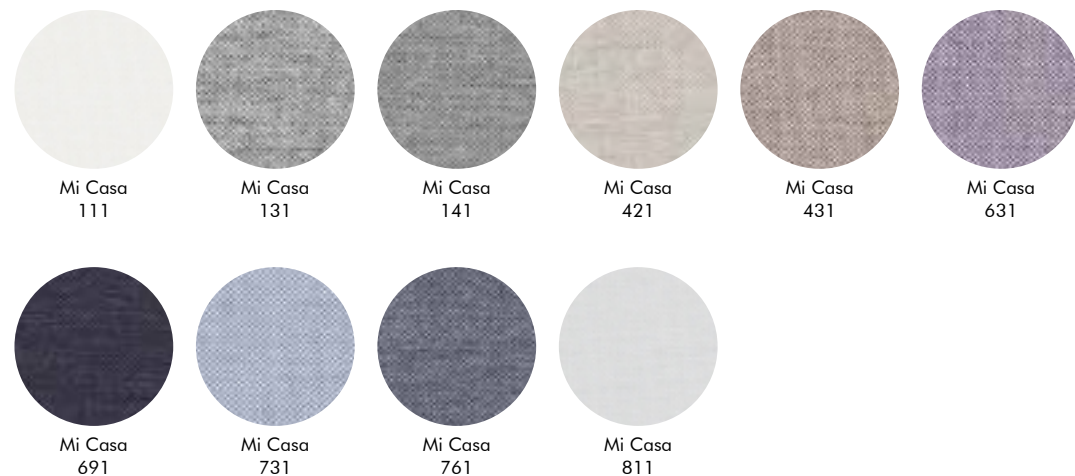
DROPS  
MI CASA

## Mi Casa

## kvadrat



**Characteristics** Acoustic, Opaque  
**Composition** 100% Trevira CS  
**Weight** App. 600 g/lin.m  
**Flammability** EN 13 773 class 1 | BS 5867 part 2 type B | DIN 4102 B1  
| SN 198 898 5.2 | NF D 92 507 M1 | UNI 9177 classe 1  
| IMO FTP Code 2010:Part 7  
**Fastness to light** Note 5-7, ISO 105-B02  
**Maintenance** Washable at max. 60°C. Half wash load. Drip drying.  
Ironing might be necessary when washed at 60°C.



CUR F  
BONUS  
DROPS ACOUSTIC

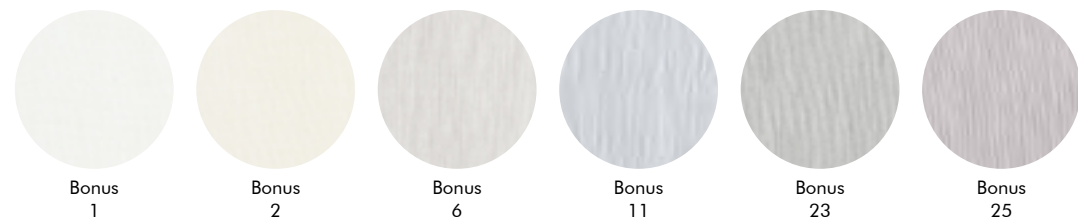
Bonus



**Characteristics** Acoustic, Translucent  
**Composition** 100% wool  
**Weight** 385 g/lin.m  
**Fastness to light** 5 (ISO 1-8)  
**Maintenance** Washable on hand wash cycle

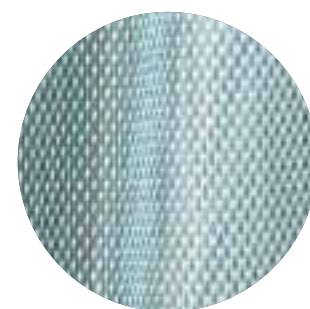


kvadrat



Bonus 1    Bonus 2    Bonus 6    Bonus 11    Bonus 23    Bonus 25

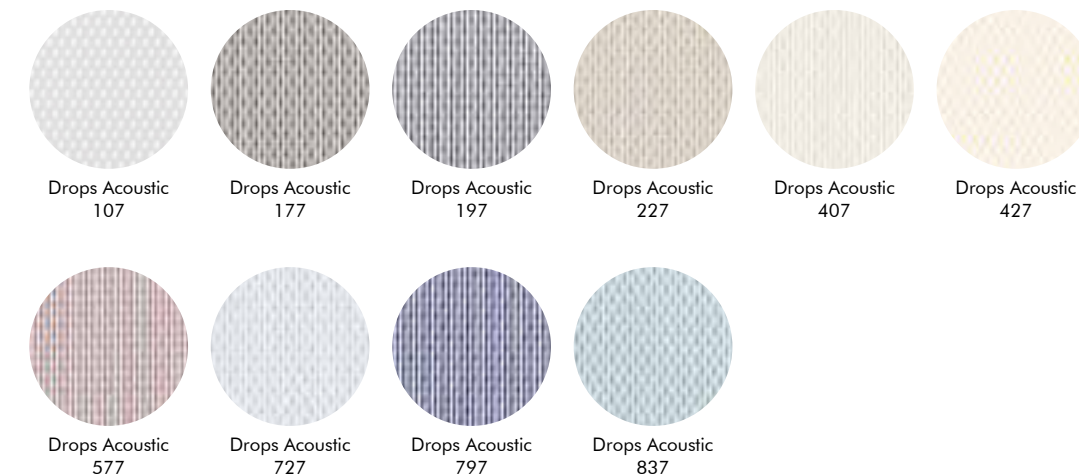
Drops Acoustic



**Characteristics** Acoustic, Transparent, Light transmittance of 31-46% (DIN EN 410)  
**Composition** 100% Trevira CS  
**Weight** App. 315 g/lin.m  
**Flammability** BS 5867 part 2 type B|DIN 4102 B1|EN 13773 Class 1  
|IMO FTP Code 2010:Part 7|NF P 92 507 M1|SN 198 898  
5.2|UNI 9177 classe 1  
**Fastness to light** Note 7 ISO 105-B02  
**Maintenance** Washable at max. 60°C. Drip drying.



kvadrat



Drops Acoustic 107    Drops Acoustic 177    Drops Acoustic 197    Drops Acoustic 227    Drops Acoustic 407    Drops Acoustic 427  
Drops Acoustic 577    Drops Acoustic 727    Drops Acoustic 797    Drops Acoustic 837

CUR F  
BONUS  
DROPS ACOUSTIC