

## Clipper

The Clipper task chair delivers fantastic comfort with simple elegant styling. However, it is capable of providing a comprehensive suite of adjustments and features a dynamic synchronised tilt action.

The elegant and well proportioned back frame supports a soft touch 3D self supporting mesh. With choices of colours for moulded plastic components and for the 3D mesh it is easy to tailor the appearance to complement its environment.



Design by Allermuir Design

### Standard Features (\*Selected models only)

Black components with breathable mesh back in black  
Injection moulded 5 star plastic base  
60mm castors  
Gas lift - 150kg  
Synchronised mechanism with adjustable tension and travel limitation in four steps, including locking upright  
Width and height adjustable arms with multi-function arm pad\*

Fully adjustable headrest\*  
Moulded foam seat cushion  
Integrated user instructions

### Optional Features

60mm seat slide  
Adjustable Lumbar  
4D Adjustable arm pads  
Castors for hard and soft floor coverings  
Gas lift options

### Performance Standards

BS5459-2:2000+A8:2008  
BS5459-2:2000+A8:2008-FS055  
BSEN1335PT1:2000  
NPR1813  
EN ISO 9241-5:1999  
BSEN1335:2003 PT2/3

## DIMENSIONS

Measurement - mm	CL740	CL740HA	CL740MF	CL760	CL760HA	CL760MF
Overall Height (OH)	1000 - 1110 mm	1000 - 1110 mm	1000 - 1110 mm	1195 - 1370 mm	1195 - 1370 mm	1195 - 1370 mm
Overall Width (OW) - excluding arms	640 mm	640 mm	640 mm	640 mm	640 mm	640 mm
Overall Width (OW) - width 2D arms fixed (standard)	-	680 mm	-	-	680 mm	-
Overall Width (OW) - width adjust arms (min-max) 2D (Optional Extra)	-	645-715 mm	-	-	645-715 mm	-
Overall Width (OW) - width adjust arms (min-max) 3D	-	-	645-715 mm	-	-	645-715 mm
Overall Depth (OD)	690 mm	690 mm	690 mm	690 mm	690 mm	690 mm
Seat Height	435-550 mm	435-550 mm	435-550 mm	435-550 mm	435-550 mm	435-550 mm
Seat Width	485 mm	485 mm	485 mm	485 mm	485 mm	485 mm
Seat Depth	450 mm	450 mm	450 mm	450 mm	450 mm	450 mm
Height of arm above seat	-	165-265 mm	165-265 mm	-	155-255 mm	165-265 mm
Product Weight	11.5kg	14kg	14kg	12kg	14.5kg	14.5kg

# Clipper

## FINISH OPTIONS

Five star base available in either Black plastic, Light Grey plastic or polished aluminium

Moulded plastic components are available in Black with optional Light Grey back frame and arms

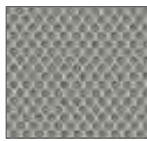
3D Mesh back in a choice of six colours: Black, Grey, Burnt Orange, Fresh Apple, Snow and Soft Cyan

Clipper can be upholstered in a broad range of contract upholstery fabrics, vinyls and leathers from The Senator Group standard upholstery collection

## MESH COLOURS



Black



Grey



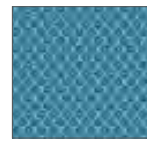
Snow



Burnt Orange



Fresh Apple



Soft Cyan

## FRAME COLOURS

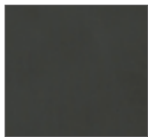


Black



Light Grey

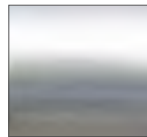
## BASE COLOURS



Black



Light Grey



Polished Aluminium

## ENVIRONMENTAL

### Material Content

Components are constructed of the following



Fabric



Steel



Aluminium Castings

### Recycled Content

Contains up to 34% of Recycled Material



Fabric



Steel



Aluminium Castings

### Recyclability

The range is 100% recyclable

100%