

Product Information

- Upholstered hardwood subframe, steel underframe and CMHR foam
- Available with bench seating, or without for use with task chair
- Optional integrated power modules and USB charging points
- Available in a variety of fabrics (restrictions apply)
- White or oak work surface available
- White or natura work rails
- Certifications: BS EN 1021-1: 2006, BS EN 1021-2: 2006



Product Code: SCE1A1
Description: Single acoustic booth with 800mm MFC work surface.

Dimensions

Height	1,443mm
Width	1,600mm
Depth	900mm
Weight	155kg



Product Code: SCE1A2
Description: Side-by-side double acoustic booth with 800mm MFC work surface.

Dimensions

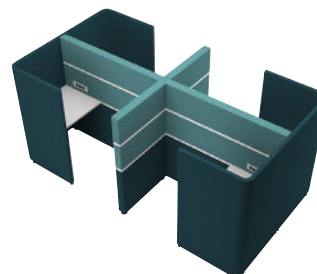
Height	1,443mm
Width	1,600mm
Depth	1,700mm
Weight	229kg



Product Code: SCE1A3
Description: Back-to-back double acoustic booth with 800mm MFC work surface.

Dimensions

Height	1,443mm
Width	3,200mm
Depth	900mm
Weight	268kg



Product Code: SCE1A5
Description: Quad acoustic booth with 800mm MFC work surface.

Dimensions

Height	1,443mm
Width	3,200mm
Depth	1,700mm
Weight	382kg



Product Code: SCE2A1
Description: Single acoustic booth with 1,200mm MFC work surface.

Dimensions

Height	1,443mm
Width	1,600mm
Depth	1,300mm
Weight	170kg



Product Code: SCE2A2
Description: Side-by-side double acoustic booth with 1,200mm MFC work surface

Dimensions

Height	1,443mm
Width	1,600mm
Depth	2,500mm
Weight	280kg



Product Code: SCE2A3
Description: Back-to-back double acoustic booth with 1,200mm MFC work surface.

Dimensions

Height	1,443mm
Width	3,200mm
Depth	1,300mm
Weight	291kg



Product Code: SCE2A5
Description: Quad acoustic booth with 1,200mm MFC work surface.

Dimensions

Height	1,443mm
Width	3,200mm
Depth	2,500mm
Weight	391kg

Acoustic Booths Collection

Product Information

- Upholstered hardwood subframe, steel underframe and CMHR foam
- Available with bench seating, or without for use with task chair
- Optional integrated power modules and USB charging points
- Available in a variety of fabrics (restrictions apply)
- White or oak work surface available
- White or natura work rails
- Certifications: BS EN 1021-1: 2006, BS EN 1021-2: 2006



Product Code: SCEIB1
Description: Single acoustic booth with 800mm MFC work surface & bench.

Dimensions	
Height	1,443mm
Width	1,350mm
Depth	900mm
Seat Height	433mm
Weight	131kg



Product Code: SCEIB2
Description: Side-by-side double acoustic booth with 800mm MFC work surface & bench.

Dimensions	
Height	1,443mm
Width	1,350mm
Depth	1,700mm
Seat Height	433mm
Weight	260kg



Product Code: SCEIB3
Description: Back-to-back double acoustic booth with 800mm MFC work surface & bench.

Dimensions	
Height	1,443mm
Width	2,700mm
Depth	900mm
Seat Height	433mm
Weight	257kg



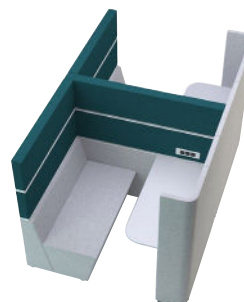
Product Code: SCEIB5
Description: Quad acoustic booth with 800mm MFC work surface & bench.

Dimensions	
Height	1,443mm
Width	2,700mm
Depth	1,700mm
Seat Height	433mm
Weight	380kg



Product Code: SCE2B1
Description: Single acoustic booth with 1,200mm MFC work surface & bench.

Dimensions	
Height	1,443mm
Width	1,350mm
Depth	1,300mm
Seat Height	433mm
Weight	171kg



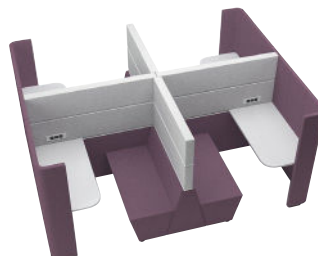
Product Code: SCE2B2
Description: Side-by-side double acoustic booth with 1,200mm MFC work surface & bench.

Dimensions	
Height	1,443mm
Width	1,350mm
Depth	2,500mm
Seat Height	433mm
Weight	277kg



Product Code: SCE2B3
Description: Back-to-back double acoustic booth with 1,200mm MFC work surface & bench.

Dimensions	
Height	1,443mm
Width	2,700mm
Depth	1,300mm
Seat Height	433mm
Weight	273kg



Product Code: SCE2B5
Description: Quad acoustic booth with 1,200mm MFC work surface & bench.

Dimensions	
Height	1,443mm
Width	2,700mm
Depth	2,500mm
Seat Height	433mm
Weight	464kg