

Nova

Nova is a clean lined, simple and stylish picnic inspired table and bench set. With its fully welded frame and 40mm thick table and bench top the Nova set is an excellent choice for that high demanding, high usage dining or breakout area because of its strength. It has the versatility to create stunning colour combinations with contrasting table and bench edges and bright powder coated colours.

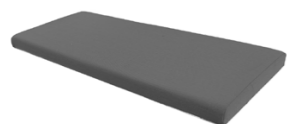


NOVA TABLE AND BENCH SET



CODE	SIZE
NOV.1200.1600	1200 x 1600
NOV.1800.1600	1800 x 1600
NOV.2000.1600	2000 x 1600

UPHOLSTERED SEAT PAD



CODE	SIZE
USP.1000.400	1000
USP.1600.400	1600
USP.2000.400	2000

FEATURES

- 40mm thick table and bench tops
- High impact resistant edges
- Easy clean laminate surfaces
- High quality powder coated 40mm thick frame
- Large range of table and bench top colours

Product Finishes

METAL FRAME FINISHES

CM CHROME RAL 9010	WH WHITE RAL 9010	OR ORANGE PANTONE 152U	RD RED RAL 3003	YE YELLOW RAL 1023	GR GREEN PANTONE 377U
BK BLACK RAL 9011	LG LIGHT GREY RAL 7032	DG DARK GREY RAL 7012	RA RAW STEEL RAW	CO COPPER CO	BL BLUE RAL 5000

MFC TABLE TOPS & EDGES

WH WHITE	DG DARK GREY	LG LIGHT GREY	BK BLACK	BH BEECH	WL WALNUT	OK OAK	PY PLYWOOD
--------------------	------------------------	-------------------------	--------------------	--------------------	---------------------	------------------	----------------------

Edges also available in

LAMINATE TABLE TOPS & EDGES

WH WHITE	OR ORANGE	RD RED	YE YELLOW	GR GREEN	BL BLUE	BK BLACK	ZB ZEBRANO
--------------------	---------------------	------------------	---------------------	--------------------	-------------------	--------------------	----------------------

Edges also available in

RT RUST	DT DRIFTWOOD	OK OAK	LG LIGHT GREY	DG DARK GREY	BH BEECH	WL WALNUT	PY PLYWOOD
-------------------	------------------------	------------------	-------------------------	------------------------	--------------------	---------------------	----------------------

TABLE TOP EDGE DETAILING

MFC MELAMINE FACED CHIPBOARD
LAMS LAMINATE SQUARE EDGE

