

## powertower

The POWERTOWER through desk unit provides access at the worksurface for power and data in a stowaway unit.

When not in use the POWERTOWER can be lowered out of sight. To use, the POWERTOWER is simply pulled up. In some circumstances POWERTOWER can be lowered while in use.

The POWERTOWER top allows cables to exit from the port formed when the unit is retracted.

Cap and grommet are available in black



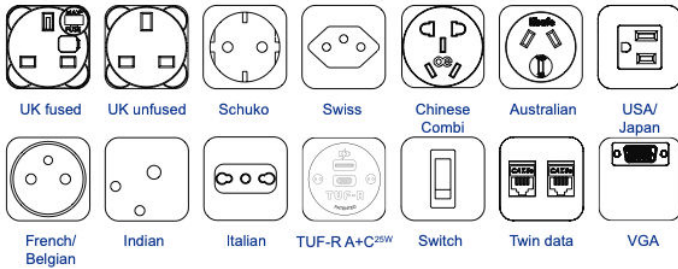
### USPs

- Through-desk unit
- Can be lowered out of sight
- Available with TUF charger
- BS6396 compliant (where applicable)
- Available with power sockets from different nationalities



# technical

## Common Modular Components\*



### Cap

For use as a cable grommet, the cap and bezel can be installed into the worktop without the POWERTOWER. The snap fit assembly of the cap onto the POWERTOWER allows flexibility on fitout planning, timing and reconfiguration.

**Finger pull**  
The finger pull aids easy raising and lowering of the Phoenix. The finger pull stows flat locking the POWERTOWER down

**Power outlets**  
a maximum of four socket outlets, individually fused, are available\*

**Guide rails & lock**  
The POWERTOWER slides easily on its guide rails and locks in the up position for access to power and data sockets

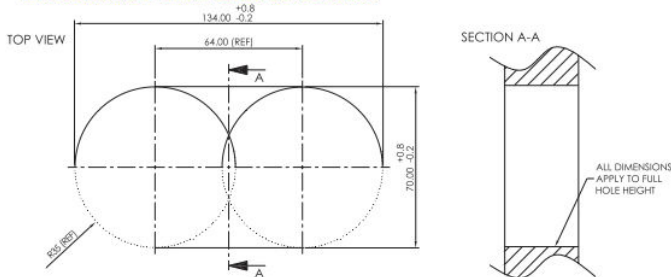
**Data outlets**  
A maximum of 4 data outlets, 1 VGA and 1 3.5mm stereo can be mounted to the removable fascia

**Bezel clamp**  
Two ring pull devices with ratchet mechanisms, lock the bezel to the desk/table. Ring pulls shear off after fitting

**Bezel**  
The bezel is clamped into the desk/table and acts as the cable pass through and a guide for the POWERTOWER. To fit the bezel, two 70mm holes are drilled at 65.2mm centres. Available in black

\*Only 2 power sockets are available when data is installed

## Installation and cutout details



## Features

### Configuration:

Power only / Data only / Combined (Power & Data/AV)  
Internal segregation between Power and Data/AV in combined POWERTOWER

### Insulation:

Re-Inforced insulated body

### Earth Bonding:

An external earth bonding lead is available on request

### Fusing: (to enable compliance to BS6396)

5 x 20mm anti-surge ceramic fuses, with colour-coded fuseclips to denote the rating (3.15A/5A)

### Testing:

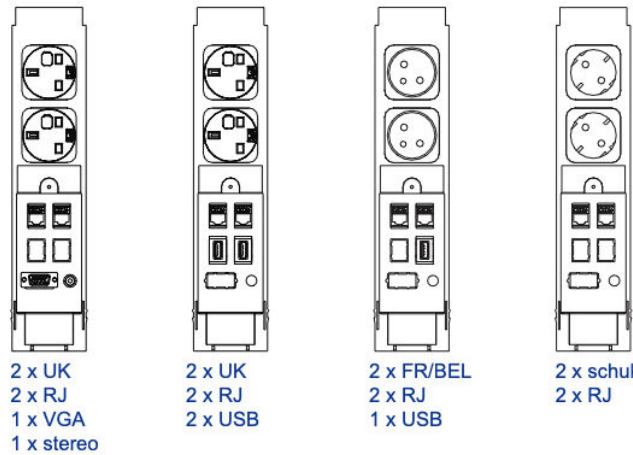
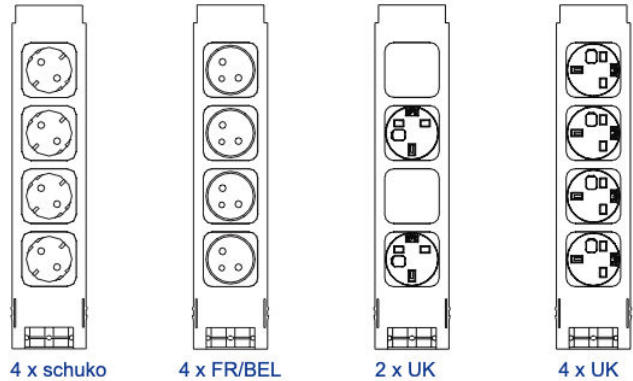
100% testing - continuity, polarity, insulation & earth

### Soft Wiring (power)

Power wired to Wieland GST connector allows starter cables to be changed to suit requirements, especially use during moves and changes (CHURN)

## Common Configurations

(other configurations available on request)



ALL DIMENSIONS APPLY TO FULL HOLE HEIGHT