

**Synamics**  
Specialist back care  
seating for all



Since its introduction in 1999, **Spynamics** has evolved from a single chair into the most comprehensive range of ergonomic seating for all shapes and sizes from 4'10" to 6'10" with a maximum weight guarantee of 30 stones.



## Spinal Dynamics

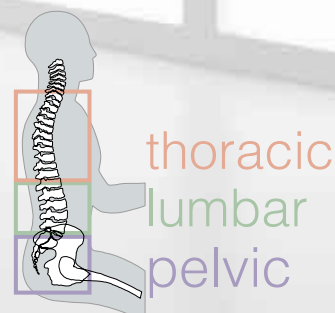
The first **spynamics** chair was designed in a modular fashion ensuring that each of the key areas of the spine received optimal support. Created together with the expertise of osteopath Stephen Green, we have used state-of-the-art material technologies combined with the latest in adjustable seating controls to bring the concept of **spinal dynamics** into the workplace.

The unique feature of **spynamics** is the **triangulation of support** provided by the pelvic module cushion and the two way adjustable lumbar. These combine to provide back comfort that surpasses all other orthopaedic chairs.

The **spynamics** range of chairs promote correct seating posture thereby aiding those with existing back complaints as well as helping others to avoid potential problems.

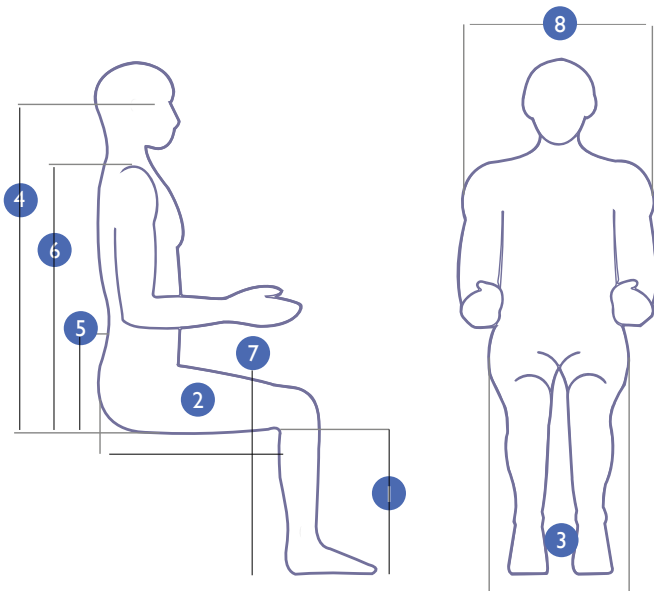


Triangulation of Support



thoracic  
lumbar  
pelvic

## fitting you to your chair

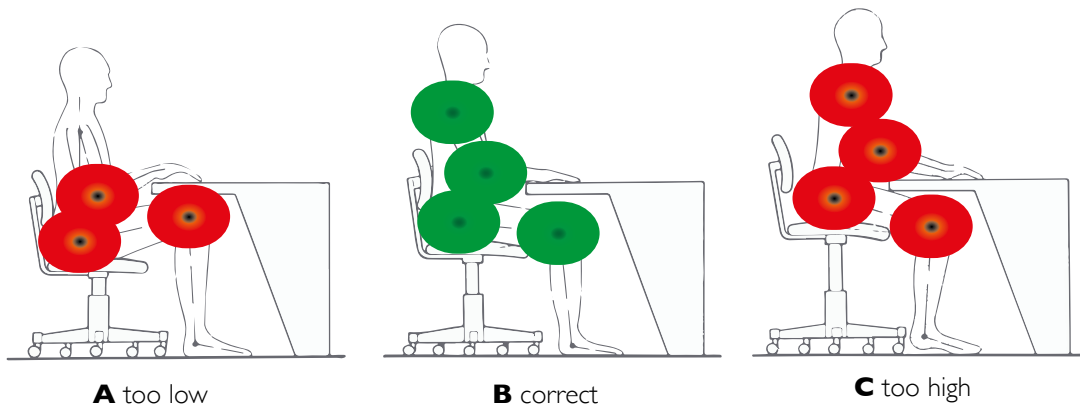


### key

- 1 Body seat height, i.e. underside of knee to floor (popliteal to floor height)
- 2 Seat length, i.e. buttocks to underside of knee (buttock to popliteal length)
- 3 Hip width (width of bitrochanter)
- 4 Operator eye height, i.e. buttocks to eye height (sitting eye height or plane of vision to seat) (see note)
- 5 Body armrest height, i.e. buttock to elbow (underside) (elbow to seat height)
- 6 Shoulder height, i.e. buttocks to shoulder (sitting shoulder height) (see note)
- 7 Desk height, as shown
- 8 Armrest separation, i.e. elbow to elbow breadth

*note: Dimensions 4 and 6 can be measured either from the seat squab or from the floor*

## correct sitting



**A** too low

**B** correct

**C** too high

# SD12 SD13 SD14

## Everyday ergonomic Back Care chairs

SD13



SD12



2 way adjustable Lumbar/ lordosis

Backrest tilt (16 degrees) and height (ratchet) adjustable (65mm)

Seat height adjustment (average 465-600mm)

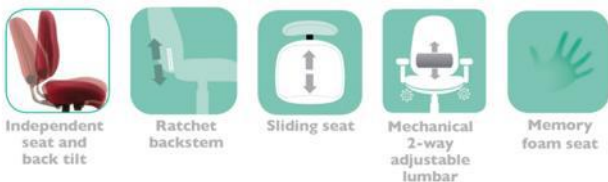
SD14

Independent seat tilt adjustment (6 degrees forward, 14.5 degrees reclining)



The square back style Spynamics models provide a cost effective 'Access to Work' seating solution; where a comfortable, supportive and adjustable 'bad back chair' is required.

### Standard



### Ergonomic features include:

- )] Heavy duty 6-way adjustable mechanism provides correct posture and personalised support
- )] 5-year warranty/8 hour daily use by up to 23.5 stone users (150kg) for single user application
- )] Overwork/overweight warranty available for 3 shift pattern use and users over 23.5 stone
- )] Seat height min/max adjustment range meets the FIRA Ergonomic Excellence Award criteria
- )] Comfort and support enhanced by a memory foam layered seat
- )] Choice of 3 contoured backs, with 2-way built-in variable lumbar support
- )] 4-way adjustable arms fitted as standard, other arm options are also available
- )] Optional coccyx cut out available as well as a selection of other seat sizes
- )] Memory foam backs and an adjustable memory foam headrest are among the optional extras