

Synamics
Specialist back care
seating for all



Since its introduction in 1999, **Spynamics** has evolved from a single chair into the most comprehensive range of ergonomic seating for all shapes and sizes from 4'10" to 6'10" with a maximum weight guarantee of 30 stones.



Spinal Dynamics

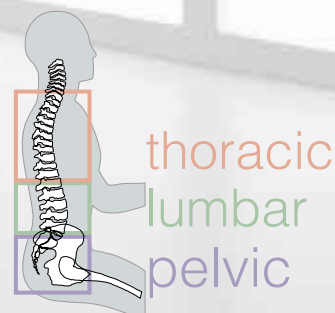
The first **spynamics** chair was designed in a modular fashion ensuring that each of the key areas of the spine received optimal support. Created together with the expertise of osteopath Stephen Green, we have used state-of-the-art material technologies combined with the latest in adjustable seating controls to bring the concept of **spinal dynamics** into the workplace.

The unique feature of **spynamics** is the **triangulation of support** provided by the pelvic module cushion and the two way adjustable lumbar. These combine to provide back comfort that surpasses all other orthopaedic chairs.

The **spynamics** range of chairs promote correct seating posture thereby aiding those with existing back complaints as well as helping others to avoid potential problems.

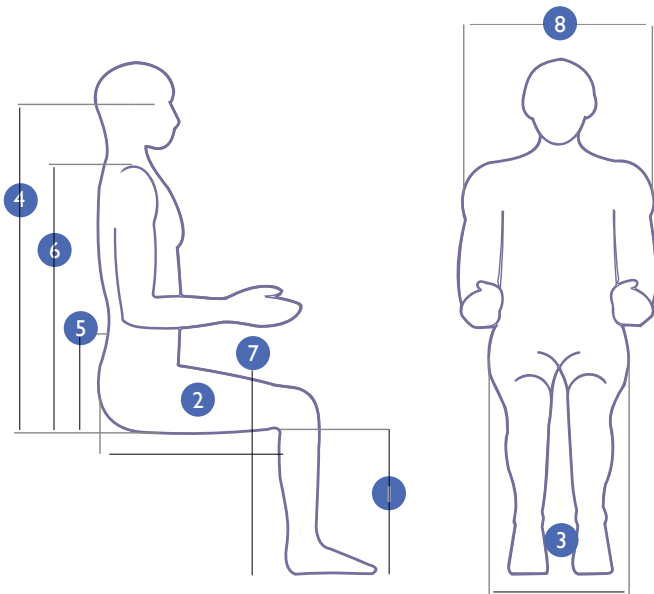


Triangulation of Support



thoracic
lumbar
pelvic

fitting you to your chair

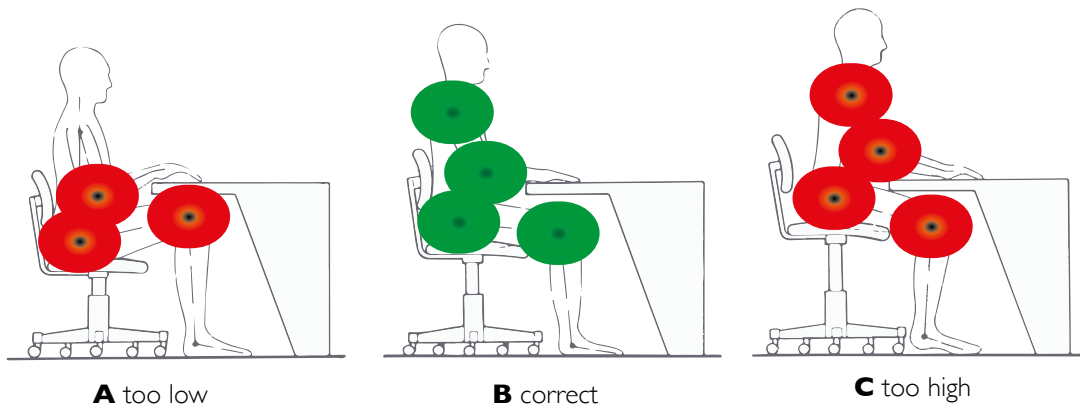


key

- 1 Body seat height, i.e. underside of knee to floor (popliteal to floor height)
- 2 Seat length, i.e. buttocks to underside of knee (buttock to popliteal length)
- 3 Hip width (width of bitrochanter)
- 4 Operator eye height, i.e. buttocks to eye height (sitting eye height or plane of vision to seat) (see note)
- 5 Body armrest height, i.e. buttock to elbow (underside) (elbow to seat height)
- 6 Shoulder height, i.e. buttocks to shoulder (sitting shoulder height) (see note)
- 7 Desk height, as shown
- 8 Armrest separation, i.e. elbow to elbow breadth

note: Dimensions 4 and 6 can be measured either from the seat squab or from the floor

correct sitting



SD1 SD2 SD3

Chronic back pain seating



SD1 Extra High Back



SD2 High Back



Each of the 3 chairs shown is designed in a modular fashion to ensure each part of the spine receives optimal support: pelvic (sacral) support through the pelvic module (cushion) and sacral pump, lumbar through the height and depth adjustable lumbar cradle and lumbar air bag (3-way) assembly and the shoulder height (thoracic) pump helps support the upper part of your back. The SD3 is the same as the SD2 with a neck/headrest – one can be fitted to the SD1 as well. The headrest is designed to fit at the top of the back if the cervical part of your spine needs extra support.



Ergonomic features include:

-) The triangulation of support provided by the removable, personalisable pelvic cushion and the 3-way adjustable lumbar
-) The sacral pump
-) The Thoracic pump
-) The coccyx relief cut out
-) The use of memory foam in seat, back, headrest and arms
-) 6-way adjustable forward tilting mechanism: adjustable for seat tilt, depth, height, tension (weight) control, backrest height (ratchet) and tilt
-) 6 seats to complement 2 back configurations including 2 height and tilt adjustable headrests for custom built comfort
-) 5-way adjustable memory foam-upholstered arms; adjustable for: height, depth (forward and back), width and (locking) swivel