

Synamics
Specialist back care
seating for all



Since its introduction in 1999, **Spynamics** has evolved from a single chair into the most comprehensive range of ergonomic seating for all shapes and sizes from 4'10" to 6'10" with a maximum weight guarantee of 30 stones.



Spinal Dynamics

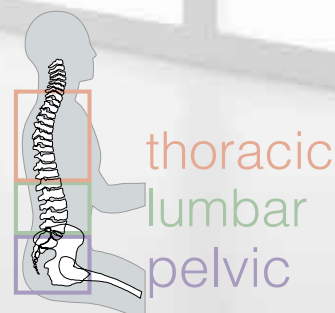
The first **spynamics** chair was designed in a modular fashion ensuring that each of the key areas of the spine received optimal support. Created together with the expertise of osteopath Stephen Green, we have used state-of-the-art material technologies combined with the latest in adjustable seating controls to bring the concept of **spinal dynamics** into the workplace.

The unique feature of **spynamics** is the **triangulation of support** provided by the pelvic module cushion and the two way adjustable lumbar. These combine to provide back comfort that surpasses all other orthopaedic chairs.

The **spynamics** range of chairs promote correct seating posture thereby aiding those with existing back complaints as well as helping others to avoid potential problems.

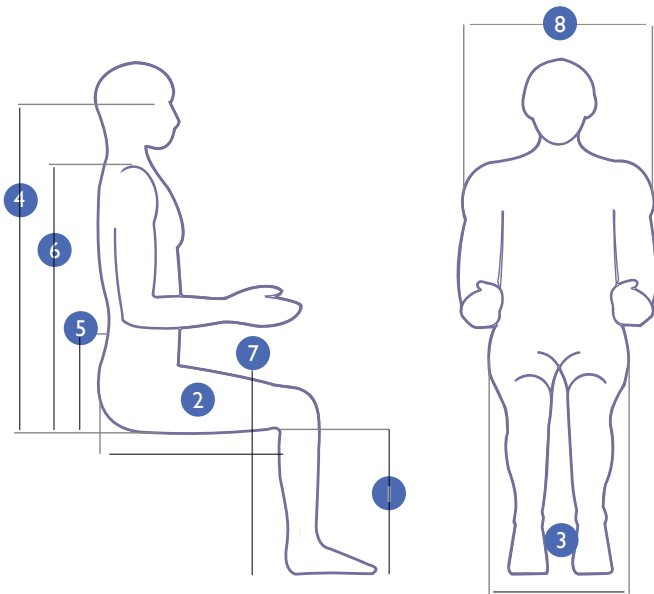


Triangulation of Support



thoracic
lumbar
pelvic

fitting you to your chair

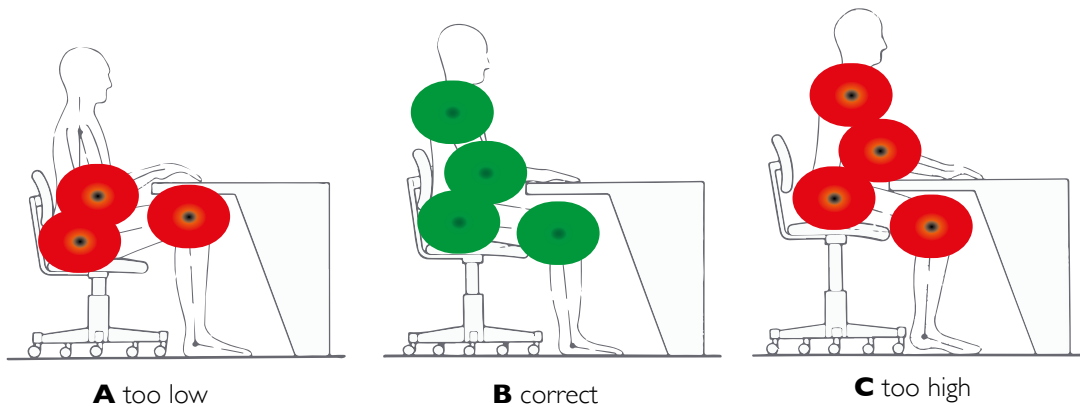


key

- 1 Body seat height, i.e. underside of knee to floor (popliteal to floor height)
- 2 Seat length, i.e. buttocks to underside of knee (buttock to popliteal length)
- 3 Hip width (width of bitrochanter)
- 4 Operator eye height, i.e. buttocks to eye height (sitting eye height or plane of vision to seat) (see note)
- 5 Body armrest height, i.e. buttock to elbow (underside) (elbow to seat height)
- 6 Shoulder height, i.e. buttocks to shoulder (sitting shoulder height) (see note)
- 7 Desk height, as shown
- 8 Armrest separation, i.e. elbow to elbow breadth

note: Dimensions 4 and 6 can be measured either from the seat squab or from the floor

correct sitting



SD6 NSSD6 All-rounder Back Care



SD6



NSSD6

2 way adjustable memory foam headrest (optional)

SD6CCHR2

NSSD6CCHR2

TP Thoracic pump

Memory foam seat and back

Sacral pump

5-way adjustable arm pads

Coccyx relief cut-out



3 way adjustable Lumber' lordosis

Backrest tilt (16 degrees) and height (ratchet) adjustable (65mm)

Seat tilt tension control

Seat height adjustment (average 465-600mm)

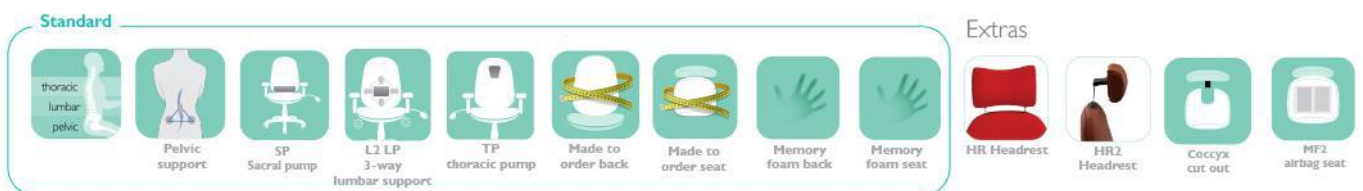
Sliding seat for adjustable seat depth: 70mm

Independent seat tilt adjustment (6 degrees forward, 14.5 degrees reclining)

Forward (negative) seat tilt limiter (blocks forward 6 degrees)

The SD6 comes in one of two versions; with more (NSSD6) or less (SD6) pelvic support. The visual appearance is intentionally more conventional to blend a little bit more into the general office environment and to not draw too much attention to the end user. No compromise is made to the bad back support features; both versions have pelvic support, sacral pump, 3-way adjustable lumbar, thoracic pump and memory foam seat & back.

Either can be specified with or without headrest, with or without coccyx relief cut out and both accommodate made to measure seat or back too.



Other ergonomic features include:

-)] Pelvic, lumbar and thoracic support
-)] Use of memory foam in seat and back
-)] 6-way adjustable forward tilting mechanism: adjustable for seat tilt, depth, height, tension (weight) control, backrest height (ratchet) and tilt
-)] 5-way adjustable arms; adjustable for: height, depth (forward and back), width and (locking) swivel
-)] 3-year guarantee for use by up to 150kg/23.5 stone users in 24/7 situations